

GREECE - ROMANIA



April, 8-13, 2025

Economic Mission - Romanian Official Delegation

THESSALONIKI

co-organizers

Consulate General of Romania in Thessaloniki- www.salonic.mae.ro

Romanian Investment Zoom Program- www.investmentzoom.ro

ROMANIAN INVESTMENT ZOOM PROGRAM

Economic Mission - Romanian Official Delegation THESSALONIKI

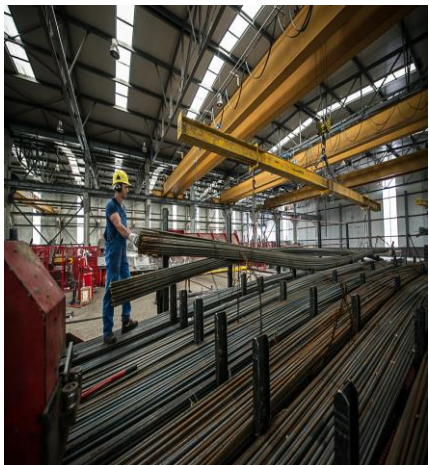


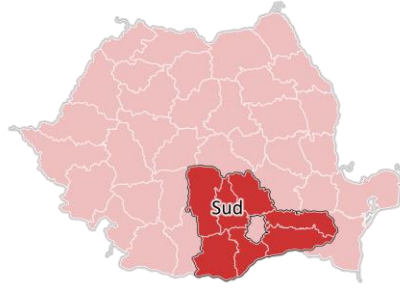
ROMANIAN INVESTMENT ZOOM PROGRAM

- ▶ www.investmentzoom.ro
- ▶ ADRIANA RADU- Managing Director AVANGARDE Group
RIZ Program Coordinator

INTEREST OF LOCAL AUTHORITIES IN ROMANIA AND PRIVATE COMPANIES -support for investment&trade

- ▶ RIZ identifies partners for Smart City and Smart Village-3200 institutions programs-priority infrastructure interest
- ▶ RIZ identifies partners for Romanian investment projects- public-private or private- private partnership -development projects in industry, agriculture and tourism
- ▶ RIZ identifies partners for bilateral trade relations with the local economic sector-import or export
- ▶ RIZ provides support for agreements in educations and cultural exchange





ALEXANDRIA Municipality

- ▶ Romania- TELEORMAN County- Population approx. 324 000
- ▶ www.alexandria.ro

ECONOMY

SC ELECTROTEL SA produces low-voltage electrical equipment, metal fabrications, and household appliances; **AMERICAN PAN PRESTIGE** - produces industrial bakery equipment, custom baking trays, stock and non-stick coatings; **SUPER EUROTETILA SRL** - textile production; **TIME INTERNATIONAL TRADING** - production of protective masks; **SC FARINA COMPANY SA**- produces crackers, pasta, bakery products. **BULINE FARM** a quail farm with a production of 50,000 eggs per day, producing quail egg specialties and quail meat specialties; **KWS SEEDS SRL** - agricultural research and variety improvement; **EXPUR SA** - grain storage. **EUROSILOZ SA** - grain storage. **AGROTEL 001 SA** - agricultural production. **AGRINATURA SRL** - an agricultural production company and an important supplier of raw materials, specializing in the cultivation of cereals (wheat, rape, corn, barley, soybeans); **AGROPEST SEED SRL** - cultivation of leguminous plants and oilseed plants; **FISHING SPORT SRL** - sport and recreational fishing. **KOYO Romania**- Bearings manufacture



VICTOR DRAGUSIN- Mayor of ALEXANDRIA Municipality

Alexandria is positioned near the border with Bulgaria, with the Danube River. In the past, the grain trade and the cattle business were the most important branch of economic life. Today, history continues with activities in agriculture 450 000 ha, an advantage to fully exploit the industrialization of raw materials, especially sunflower, corn, tomatoes, potatoes, onions, eggplants, peppers; the potential of the area is represented by the fishing that can be practiced on the Danube and by the hunting in the areas specially arranged with the hunting funds.

Alexandria has land areas on which activities and production, processing or services can be developed. Being surrounded by important vegetable basins, the main raw materials in the area are vegetables, cereals and oilseeds. Non-polluting agro-industrial productive activities, carried out in large agro-industrial constructions, distribution and storage of goods and materials; Productive and service industrial activities, non-polluting, carried out in large, medium and small industrial constructions; Tertiary activities for the industrial area, commercial services; Manufacturing production; Constructions intended for research and development, except those that use explosive or toxic substances according to the legal provisions; Warehouses and wholesale complexes;. Through the facilities developed in recent years, Alexandria has become a viable solution for weekend relaxation, providing a safe family environment, with good fresh air quality , in a friendly and unpolluted environment.

CONTACT: victordragusin@gmail.com: +40 723581918 Mr. Mayor DRAGUSIN



RAMNICU VALCEA Municipality

- ▶ Romania- VALCEA County- Population approx. 371 000
- ▶ www.primariavl.ro

ECONOMY

The chemical industry is one of the main industries **CHIMCOMPLEX SA** (Ramnicu Valcea division) and **CIECH SODA ROMANIA SA**;
The engineering industry produces here various equipment through the **VILMAR** and **WIPRO**
the building materials industry **DAMILA**,
the automotive equipment industry **FAURECIA**;
The food industry has a large number of local firms with national expansion including **DIANA**, **ANNABELLA** or **BOROMIR**, and the textile industry has a long tradition **FAVIL** and **MINET**. The wood (logging) industry **COZIA FOREST** and the passenger transport companies **ANTARES** or **DACOS**. The research area is represented by the Institute **of Cryogenics and Isotopic Separation** (ICSI), winner of numerous international awards for innovation.



MIRCIA GUTAU- Mayor of RAMNICU VALCEA Municipality

The Municipality manages the land from the **INDUSTRIAL PARK** where parcels can be leased for a period of 49 years and the industrial units located there benefit from modern utilities- looking for new partners; the **FOOD** industry - vegetable and fruit cans, dairy products as well as refreshments and alcoholic drinks;

INDUSTRIAL SECTOR- the chemical industry (inorganic and organic chemicals -polyol polyethers used for polyurethane product synthesis);

TOURISM programs include routes on the Transalpina, the highest road in Romania, treatments with thermal waters and salts from the salt mine, visits to monasteries, waterfalls, festivals and sports competitions.

Looking for companies interested in investing in Ramnicu Valcea, twinning with other municipalities, business opportunities for the local firms.

Ramnicu Valcea is the place where the current Romanian national anthem was sung for the first time. It has a population of 118.398 inhabitants and is located in the South Western part of Romania, at 176 km far from Bucharest and at 18 km from the three resorts with thermal waters of the Valcea County: Calimanesti, Olanesti and Govora. The city of Dragasani, well known for the vineyards that produce some of the best Romanian wines, is situated at about 53 kilometres. The city of Horezu with the Hurezi Monastery and the Horezu ceramics, both on the UNESCO Heritage Monuments List, is situated at 50 km from Ramnicu Valcea.

The Municipality invested more than 200 million EUR (most of them European funds) in refurbishment of public and private buildings, sustainable public transportation, sustainable public lightening, more green spaces. Those investments made Ramnicu Valcea the 4th city in Romania that provides its inhabitants the best living conditions in the country, according to a national poll.

CONTACT: primaria@primariavl.ro: +40 744 692 015 Mr. VETELEANU Vice Mayor



CARACAL Municipality

- ▶ Romania- OLT County- Population approx. 383 000
- ▶ www.primariacaracal.ro

ECONOMY

FLAGAS- fuel distribution;

TELDO - meat products manufacturing;

CONSREP CONSTRUCT - construction works of residential and non-residential buildings;

MALINA LUX - manufacturing of meat products, including poultry;

ADE GAS OIL - wholesale of solid, liquid and gaseous fuels and related products;

DARCONS ADRIPET ASSEMBLY - special construction works;

CATEX COMP - financial transaction activities;

POP PRODPLAST - manufacturing of plastic packaging items.

MONTE VERDE - produces canned vegetables; Leader International - produces canned vegetables and fruits;

GREENBRIER- Wagon Factory - produces wagons in Romania since 1973.

YAZAKI Romania - cable production;

XXL Group - Construction materials.



ION DOLDUREA- Mayor of CARACAL Municipality

Discover Caracal - a city of tradition, culture and opportunities!

Caracal Municipality is located in Olt County, Romania, the historic region of Oltenia. With a population of approximately **27,403 inhabitants**, it is the second-largest city in the county, after Slatina.

Geographically, Caracal lies at the intersection of European route E70, which connects Bucharest to Craiova and Timișoara, with national roads DN54 and DN64, facilitating significant road connections. The city, also, benefits from a substantial railway junction, complementing its road transport infrastructure. Its proximity to the river port of Corabia, Danube River (40 km) and Craiova Airport (55 km) underscores its strategic location.

The municipality of Caracal is proud for a rich cultural tradition, with the "Ștefan Iordache" National Theatre at its centre, an emblematic building between 1896 and 1901 in an eclectic style, with neo-baroque and neo-renaissance accents. Located in the historic area of the city, the theatre impresses with its massiveness and decorative richness, being a symbol of the love for art of the inhabitants of Caracal. Recently, the local administration has accessed a series of projects aimed at supporting education and community development as follows: Creation of a photovoltaic park and rehabilitation of educational institutions; Modernisation of the Caracal Municipal Hospital; Development of a modern management system in the Caracal City Hall; Major urban regeneration projects; Creation of day centres for the elderly and new nurseries for children; Increasing energy efficiency in collective housing; Increasing patient safety in Caracal Municipal Hospital; Restoration and modernization of cultural institutions; Modernization of water and sewage infrastructure; Modernization of Constantin Poroineanu Park; Construction of a teaching swimming pool; Implementation of a public transport system with ecological buses; Construction of NZeb+; Housing -Construction of a sports base. Also, starting from the objectives of the Sustainable Development Strategy of Caracal Municipality, "Development of transport and utilities infrastructure, Increasing economic competitiveness and attracting investments, Modernization of social services - health, education and social assistance, Development of agriculture and land infrastructure, Promotion of tourism and ecotourism, Increasing energy efficiency and reducing CO₂ emissions, Selective waste collection and environmental protection, Caracal is becoming a regional development pole, **offering important opportunities for investors and a favorable environment for economic and social development.** Thus, attracting investments and economic development are facilitated by the opportunities created, the municipality of Caracal offers investors a land of **approximately 90 hectares** in the southern industrial area, suitable for the development of industrial, logistics or production projects.

CONTACT: office@primariacaracal.ro: +40 769 236 944 Mr. CATALIN City Manager



MIROSLAVA Community

- ▶ Romania- IASI County- Population approx. 772 000
- ▶ www.primariamiroslava.ro

ECONOMY

The commune produces hundreds of millions of euros thanks to the Industrial Parks, managing to attract 70 investors in 5 years. It thus reached investments of 150-200 million euros and almost 2,500 employed people. The **Miroslava Industrial Park 1** opened its doors in 2016 and covers an area of 46 ha. It is the largest industrial park in the North-Eastern Region of Romania. As of 2022, it has a 100% occupancy rate.

The **Miroslava Industrial Park 2**, opened in 2019, has an area of 25,2 ha and currently hosts only the German company **MENNEKES**, which produces charging cables for electric and hybrid vehicles (generating a 45% occupancy rate). Miroslava has a **complex economic profile**: over 350 companies operate here, in areas such as services, production, constructions, agriculture, trade (METRO CASH&CARRY, ARABESQUE, DEDEMAN, etc.).

Main economic fields: Trade (wholesale and retail); Vehicles and motorcycles repair; Construction; Information and communications; Professional, scientific and technical activities.



NITA DAN- Mayor of MIROSLAVA Community

Miroslava are successful - **2300** multinational companies- **two Industrial Park, 46 ha and 25 ha**, located near the BorgWarner Romania factory and behind SC Antibiotice SA Iasi; Distance 15 km to Iasi airport;

COOPERATION INTEREST -Identification the opportunities to develop the business in the **second Industrial Park** to invest in development

production businesses with special facilities and very low prices, the border with Moldova and Ukraine. Benefits for investors: acces to highly and medium skilled workforce; Iasi Municipality is the oldest and most prestigious University center in Romania- 60.000 students and can provide extremely valuable human resources; Discount on local taxes for investments; developed infrastructure and modern communications networks;

support from City Hall; Acces other destinations from Iasi International Airport, located at 20 minutes from Industrial Park; Developing a health project, to build of a new, **multidisciplinary hospital** and an international standard heliport, 8-10 hectares- owners City Hall, necessary for the North-East Region of Romania with 3.3 million people; Aqua Park Project to develop - partner for all the services necessary, products and equipment

CONTACT: secretariat@primariamiroslava.ro; +40 746 533 227 Ms. IFTIMIE Investment Manager



MILISAUTI City

- ▶ Romania- SUCEAVA County- Population approx. 642 000
- ▶ www.primariamilisauti.ro

ECONOMY

Annually, on almost 500 ha, farmers grow cabbage, and the harvest amounts to approximately 16,000 tons. Cabbage is sold either raw, pickled, or in other cut forms. In addition to cabbage, cucumbers are grown on several hundred ha.

Every year, Milișăuți organizes the "Cabbage Festival", an annual celebration that includes an exhibition of the main seasonal agricultural products (over 500 tons of pickles are exposed here annually, especially cabbage and cucumbers), sarmale tastings, a horse parade, concerts and folk dances.

Cheese factory, 3 ballast pits, 1 sawmill, a few auto repair shops and many, many commercial establishments.



VASILE CARARE- Mayor of MILISAUTI City

ECONOMY- Distance: 28 km to Suceava Municipality and 8 km Rădăuți Municipality
Location—near at the Highway no 7-on the construction;

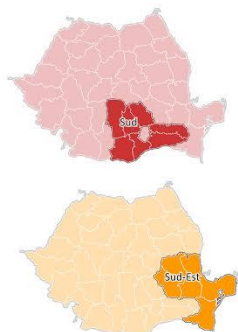
Activities: known for cabbage and cucumber crops

Vegetable farms; Milk processing plant; Animal farms—sheep -5000 and pigs—1000;
International transport companies

The main occupations of the inhabitants are: agriculture, animal husbandry and processing of agricultural products; in recent years, a small private economic sector has also developed, mainly focused on meat processing, wood processing, ballast and sand exploitation from the Suceava River basin, construction materials production, transit tourism, small crafts, road transport services.

INTEREST - City Hall offer to concession or rent the lands for investment projects;
Partnerships; Twinning; Identification of investment partners for industrial park;
Support for vegetable, industrial area products for export; Identification of investment partners for: silos, processing - others products from animal farms;
investment for the processing of animal skins; Import interest - agricultural fertilizer raw materials; agricultural equipment and machinery

CONTACT: contact@primariamilisauti.ro; primar@primariamilisauti.ro— 0756 503 220



ALCOS BIOPROD & HEMP MED PHARMA Companies

- ▶ Romania- DAMBOVITA County- Population approx. 479 000;
 - ▶ Romania- BUZAU County - Population approx. 405 000;
- www.alcosbioprod.ro; hempmedpharma.com;

PRODUCTS food supplements



ANDREI APETREI- CEO of ALCOS BIOPROD Company

DANIEL HANGANU- CEO of HEMP MED PHARMA Company

ALCOS BIOPROD, in partnership with SOLAR POWER MANAGEMENT, represents the HEMP MED PHARMA brand, dedicated to natural hemp-based supplements.

This collaboration combines Alcos Bioprod's expertise in agriculture and processing with Solar Power Management's infrastructure and production capacity, ensuring high-quality products for both domestic and international markets.

Advantages of HempMed Pharma: The largest CBD extraction unit in Europe, located in Romania; Processing capacity: 1 ton of biomass per 8 hours; Flexible production options: Broad Spectrum Oil (THC-free), distillates, and isolates; Fully licensed HACCP And ISO operational facility.

The company has a turnover of 1.5 million euros, employs 10 people, and operates a modern facility in Buzau .Hemp oil is a rich source of Omega-3 and Omega-6 in an optimal ratio and contains unsaturated fats that help maintain normal cholesterol levels. It is also high in vitamin E, which plays a key role in protecting cells from oxidative stress.

About Alcos Bioprod: Alcos Bioprod owns an organic hemp farm and produces certified organic products.

The company has a turnover of 1.2 million euro, employs 10 people, and operates an organic farm in Siriu, Constanța County, spanning 35 hectares. Our production capacity reaches 100,000 CBD units per month across 40 different product variations, including , Blackcurrants, hazelnuts, walnuts, and medicinal herbs. Our team manages one of the few 100% organic hemp (Cannabis Sativa) plantations in Romania. We are committed to delivering products of the highest quality, using pure, safe, and legally certified BIO hemp extracts, tested in specialized laboratories.

For example, in 2015, only 81 studies were published on CBD, whereas in 2019, over 528 studies emerged. By 2020, research on CBD's effectiveness in protection and treatment—including potential applications for coronavirus—showed promising results. "We have already signed a memorandum of association with UMF Carol Davila, Bucharest, the Romanian Academy, IBA Bucharest, and the Dr. Babeş Institute for the medical study of four of our products."

As a result, we continuously invest in research, focusing on hemp cultivation that yields high levels of CBD, beneficial macromolecules, cannabinoids, terpenes, and flavonoids. We also invest in cutting-edge technologies for producing CBD oils and ozonated essential oils. Products: www.alcosbioprod.ro/produse/toate

Business Interests: We are looking to identify potential cooperation partners and sales markets within the pharmaceutical industry and pharmacy chains for the export of internationally certified products.

CONTACT: andrei@alcosbioprod.ro; apetrei.apetrei@gmail.com; +4 0737 572 828 Mr Andrei APETREI



▶ ROMANIA

Legends and traditions of over thousands of years

Thank you
for your attention

For Further Clarification

Please, Contact Us

Adriana Radu

Managing Director

Avangarde Group Romania

RIZ Program

www.investmentzoom.ro

+0040 31 424 94 96; +0040 724 044 909

adriana@avangardegroup.ro

Romania is one of the most important countries in Europe, for many influential people in the world.

With its amazing landscapes and history, attractive for skilled labor, profitable for agriculture and industry, important for its position, Romania surprises every day with its values.

RIZ promotes the economic interests of the City Halls of Romania and private companies in their communities, to attract foreign investment in industry, agriculture or tourism, to develop connections for bilateral trade, through export and import for raw materials, products and services, research for profitable investment or other commercial topics, import-export.